



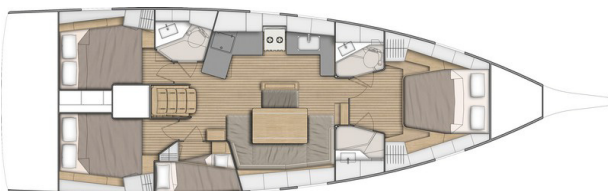
3 cabins 2 heads version:



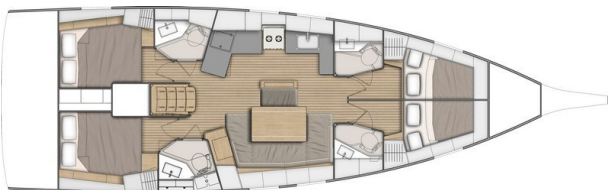
3 cabins 3 heads version:



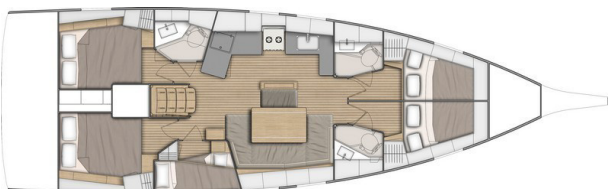
4 cabins 2 heads version:



4 cabins 4 heads version:



5 cabins 3 heads version:



GENERAL SPECIFICATIONS

• Overall Length (L.O.A)	14,60 m	47'11"
• Hull length	13,65 m	44'9"
• L.W.L.	13,24 m	43'5"
• Hull Beam	4,50 m	14'9"
• Deep draft (Cast iron)	2,35 m	7'9"
• Deep ballast weight	2 735 kg	6,028 lbs
• Shallow draft (Cast iron)	1,75 m	5'9"
• Shallow ballast weight	3 061 kg	6,746 lbs
• Performance draft (Cast iron/Lead)	2,65 m	8'8"
• Ballast weight performance	2 576 kg	5,678 lbs
• Air draft	20,31 m	66'8"
• Air draft (Mast Performance)	21,31 m	69'11"
• Light displacement	10 597 kg	23,356 lbs
• Fuel tank capacity (standard)	200 L	53 US Gal
• Fuel tank capacity (Option)	200 L	53 US Gal
• Fresh water capacity (standard)	370 L	98 US Gal
• Fresh water capacity (Option)	200 L	53 US Gal
• Engine power (standard)	57 HP	57 HP
• Engine power (Option)	80 HP	80 HP

ARCHITECTS / DESIGNERS

- Naval Architect: Pascal Conq
- Outside & interior design: Nauta Design

EC CERTIFICATION

- Category A - 10 people
- Category B - 11 people
- Category C - 12 people

STANDARD SAILS DIMENSIONS

• Furling mainsail (standard)	44,50 m ²	479 sq/ft
• Self-tacking jib (standard)	40,42 m ²	435 sq/ft
• Classic mainsail	54 m ²	581 sq/ft
• Furling genoa (109 %)	52,16 m ²	561sq/ft
• Code 0	102 m ²	1,098 sq/ft
• Asymmetrical spinnaker	152 m ²	1,636 sq/ft
• I	17,72 m	58'2"
• J	5,72 m	18'9"
• P - Roller furling mast	16,57 m	54'4"
• P - Classic mast	16,82 m	55'2"
• E	5,630 m	18'6"

PERFORMANCE (Extended classic mast)

• Classic mainsail	57,60 m ²	620 sq/ft
• Genoa	57,80 m ²	622 sq/ft
• I	18,33 m	60'2"
• J	5,71 m	18'9"
• P	17,82 m	58'6"
• E	5,63 m	18'6"



STANDARD EQUIPMENT

CONSTRUCTION

- Design made following European Directive requirements and according to CE certification
- Monolithic polyester contact hull
- Monolithic contact structural counter mold (Fabric - resin) bonded to the hull
- Injected deck construction in fiberglass and Saerform foam sandwich, covered with non-slip diamond pattern
- Cast iron keel fixed with bolts and stainless steel backing plates
- Twin rudders affixed with stainless steel stock
- White hull - Grey metal hull decoration
- 8 Hull portlights

DECK EQUIPMENT

RIGGING

- Anodized aluminum mast, deck stepped with in-mast furling system, 2 Aft swept spreaders
- Anodized aluminum boom
- Cathedral type single-strand stainless steel standing rigging
- Split backstay
- Rigid boom vang
- Self-tacking jib with on-deck furler
- 2 Stand Up mainsheet blocks on the coachroof
- 1 Self-tacking jib track with traveller
- All lines lead back to the helm stations (except boom topping lift and genoa halyard)
- Complete running rigging: Main halyard, Genoa halyard with cleat on mast, Boom topping lift with cleat on mast, Mainsheet, 1 Self-tacking jib sheet
- 6 Clutches
- Halyard covers
- 2 Flag halyards

WINCHES

- 1 Self tailing winch (H40.2 STA) at each helm station
- 1 Aluminum Speed Grip winch handle
- 2 Winch handle holders

SAILS

- Furling mainsail Dacron, with UV protection Natural, horizontal cut (North Sails)
- Self-tacking jib Dacron with UV protection Natural, horizontal cut (North Sails)

MOORING - ANCHORING GEAR

- Self-draining chain locker - Clench bolt - Hatch cover
- Single roller stainless steel bow fitting with offset roller
- 12 V - 1 000 W vertical electric windlass - Remote control
- 6 Aluminum mooring cleats, Length: 400 mm / 15³/₄" - Stainless steel chafing plate

SAIL LOCKER

- Access by polyester cover, Passage width: 65 x 50 cm / 2'2" x 1'8"
- Stainless steel ladder
- Shelving unit

SAFETY ON DECK

- 1 Open stainless steel pulpit
- 2 Stainless steel aft pushpits
- 2 stainless steel handrails on coachroof
- 1 Ring lifebuoy bracket
- Welded ring on pushpit for flag
- Double life lines and stainless steel stanchions, 650 mm / 2' 2"
- Emergency ladder on pushpit

COCKPIT

- Self-bailing cockpit
- 1 Watertight compartment under cockpit benches & 1 Wet locker
- 1 Locker in cockpit bottom
- 1 Gas compartment under port helmsman seat
- Teak slats on cockpit benches
- Solid wood slatted helm seats with starboard storage locker
- Foldaway helmsman foot chock
- 2 Steering wheel consoles: Stainless steel steering wheels (900 mm diameter / 2'11") - Anthracite leather covering - Steering gear at the helm station - Steering line transmission system - Stainless steel handrail
- 2 Deck accesses for emergency tiller
- 1 Emergency tiller
- 1 Steering compass on the cockpit table
- Engine throttle and control panel on starboard
- Cockpit table, stainless steel frame, 2 wooden leaves, lighting, 4 glass holders, stainless steel handrails, lift raft storage
- 1 Cockpit shower with mixer tap
- 1 PMMA companionway door in 2 removable parts - Sliding hatch made of PMMA

SWIM PLATFORM / AFT TRANSOM

- Fully opening transom, convertible into swim platform (2,65 m x 0,80 m / 8'8" x 2'7")
- Intermediate cockpit access step
- Manually controled
- Teak decking on swim deck
- 1 Stainless steel, removable bathing ladder with dedicated stowage in the cockpit



INTERIOR

- Woodwork Alpi Walnut
- Rovere Alevé Parquet type laminated floorboards
- Interior cushions in cloth
- Padded lining in salon (Beige)
- Mattresses in the cabins, HR35kg/m³ foam

Standard version: 3 cabins 2 heads version



COMPANIONWAY

Headroom: 1,98 m / 6'6"

- Wooden salon companionway with molded wood hanging steps with non-slip surface
- 1 Stainless steel handrail with anthracite leather sheathing (to port)

SALON - STARBOARD

Headroom: 2,01 m / 6'7"

- U-shaped salon bench
- Salon table - wooden top
- Central seat facing the table, without backrest
- Mirror on bulkhead, at base of companionway
- Storage under bench seats
- Stowage provided under the floor (Stowage for bottles + 2 2 plastic baskets)
- Piston-assisted hinges opening mechanism
- Bookshelf against forward bulkhead
- 1 Electrical panel for access to electrical connections (to starboard)
- 2 Hull portlights
- 2 Coaming glazing
- 2 Opening deck hatches with mosquito screens/blinds

CHART TABLE & SOFA - PORTSIDE

Headroom: 1,94 m / 6'4"

- Table with storage - molded wood fiddle - Laminated covering
- Meridian function seat facing the salon
- 2 USB sockets
- 1 Hull portlight

GALLEY - PORTSIDE

Headroom: 1,94 m / 6'4"

- L-shaped kitchen
- Counter-top in Clay compact with Corian fiddles
- Stainless steel sink 2 rectangular basins - 1 Faucet with hot/cold water under pressure - Clay compact sink cover with cutting board function on back
- 1 Gas stove 2 burners - Stainless steel oven on gimbal - Stainless steel protection handrail
- 1 85 L ice box, top opening (without refrigeration unit)
- 1 130 L refrigerator (12 V), front opening
- Fitted cupboards and closed cubbyholes
- Bin under sink
- Low unit: 1 Drawer, 2 Doors against companionway bulkhead
- 1 Opening portlight with curtains in the coachroof side window
- 1 Hull portlight

OWNER'S CABIN

Headroom: 1,95 m / 6'5"

- Central double bed (2,00 m x 1,53 m x 1,23 m / 6'7" x 5' x 4')
- 2 Hanging lockers, Open storage compartment along the hull, 6 Upper lockers, 1 Drawer under the bed
- 1 Storage locker either side of the bed
- 2 Night tables
- 2 Flexible and adjustable bedside lamps
- 2 USB sockets
- 2 Flush deck hatches with mosquito screen/blind
- 2 Hull portholes with sliding blind

2 PRIVATE HEADS:

Headroom: 1,93 m / 6'4"

to port:

- Manual marine toilet
- 1 50 L / 13 US Gal Rigid holding tank
- 1 Polyester basin - Mixer tap
- 1 Cabinet - Mirror
- Toilet accessories
- 1 Deck hatch with mosquito screen/blind

to starboard:

- Shower with wooden seat, white polyester shower base
- 2 Storage closets
- 1 Deck hatch with mosquito screen/blind
- Sink with mixer tap

PORT AFT CABIN

Headroom: 1,92 m / 6'4"

- 1 Double bed (2,05 m x 1,40 m / 6'9" x 4'7")
- 1 Hanging locker - 2 Cupboard units - 1 Cubby hole locker
- 1 Bed access sideboard
- 2 Flexible and multi-directional reading lights at headboard
- 2 USB sockets
- 1 Hull porthole with sliding blind
- 1 Cockpit opening window with curtain under cockpit seats
- 1 Fixed cockpit window with curtain on the coaming

STARBOARD AFT CABIN

Headroom: 1,92 m / 6'4"

- 1 Double bed (2,05 m x 1,40 m / 6'9" x 4'7")
- 2 Cupboard units - 1 Cubby hole locker
- 1 Bed access sideboard
- 2 Flexible and multi-directional reading lights at headboard
- 2 USB sockets
- 1 Hull porthole with sliding blind
- 1 Cockpit opening window with curtain under cockpit seats
- 1 Fixed cockpit window with curtain on the coaming

OWNER'S HEAD - STARBOARD

Headroom: 1,92 m / 6'4"

- Access from the salon or the starboard aft cabin
- Separate shower - Self-draining storage bin - 1 Mixer tap - White polyester shower base
- 1 Manual marine toilet
- 1 64 L / 17 US Gal Rigid holding tank
- 1 Polyester basin - 1 mixing tap hot/cold water
- 1 Cabinet + Storage space under the basin
- 2 Mirrors
- Toilet accessories
- 2 Opening ports on coaming with curtains on side windows

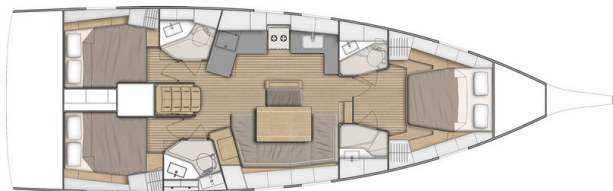


BENETEAU

Oceanis 46.1

General Equipment list - North America

3 cabins 3 heads version



Large lengthways galley facing the salon instead of the starboard sofa.

Central unit against central seat, backrest function.
The starboard aft cabin hanging locker is reduced.

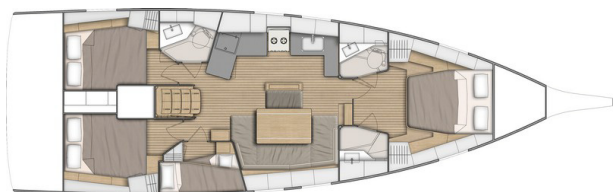
OWNER'S HEAD - PORTSIDE

- Access from the salon or the aft cabin
- 1 Manual marine toilet
- 1 64 L / 17 US Gal/Rigid holding tank
- 1 Polyester basin - 1 mixing tap hot/cold water
- 2 Mirrors
- Toilet accessories
- 1 Opening portlight with curtains in the coachroof side window

LENGTHWAYS GALLEY COUNTER

- Counter-top in Clay compact with Corian fiddles
- Stainless steel sink 2 rectangular basins - 1 Faucet with hot/cold water under pressure - Clay compact sink cover with cutting board function on back
- 1 Gas stove 2 burners - Stainless steel oven on gimbal - Stainless steel protection handrail
- 1 85 L ice box, top opening (without refrigeration unit)
- 1 130 L refrigerator (12 V), front opening
- 3 Closed high shelves, 1 High open cubby hole locker
- Bin with access on the counter-top
- 1 Lower unit: 3 Storage drawer
- 1 Low unit: 1 Drawer 1 Door
- 1 Opening portlight with curtains in the coachroof side window
- 1 Hull portlight

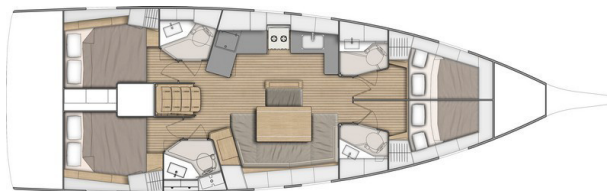
4 cabins 2 heads version



The starboard head of the standard version is replaced by a cabin with bunk beds:

- Headroom: 1,92 m / 6'4"
- 2 Bunk beds: Top bunk (2,04 m x 0,67 m - 0,53 m / 6'8" x 2'2" - 1'9") - Bottom bunk (2,00 m x 0,60 m - 0,42 m / 6'7" x 2' - 1'5")
- Storage
- 1 Opening porthole with curtain

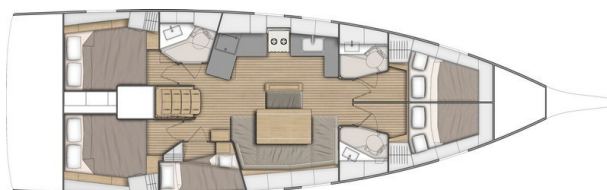
4 cabins 4 heads version



The salon is unchanged. The cabins and heads are identical to version 3 cabins, 3 heads.

Forward: 2 cabins each with their private head.

5 cabins 3 heads version



The starboard head of the standard version is replaced by a cabin with bunk beds:

- Headroom: 1,92 m / 6'4"
- 2 Bunk beds: Top bunk (2,04 m x 0,67 m - 0,53 m / 6'8" x 2'2" - 1'9") - Bottom bunk (2,00 m x 0,60 m - 0,42 m / 6'7" x 2' - 1'5")
- Storage
- 1 Opening porthole with curtain

2 SYMMETRICAL FORWARD CABINS

Headroom: 1,95 m / 6'5"

- 1 Double bed (2 m x 1,40 m x 0,80 m / 6'7" x 4'7" x 2'7")
- 1 Hanging locker - 2 Closed high shelves, 2 Open cubbyholes, 1 Drawer under the bed
- 1 Swivelling reading light
- 1 Deck hatch with mosquito screen/blind
- 1 Hull porthole with sliding blind
- 2 USB sockets
- Access door to the head



ENGINE

- Engine Yanmar Diesel:
 - 57 HP/57 HP, Common Rail (standard)
 - 80 HP/80 HP, Common Rail (Option)
- Engine control at the starboard helm station - Control panel
- Engine compartment: Soundproofing foam - Ventilation: 3 air intakes and 1 forced air outlets
- 1 Alternator 12 V / 125 Amp
- 1 Rotomolded diesel tank 200 L / 53 US Gal (under starboard aft berth) - Electronic gauge - Low level alarm - 1 Tank filling access
- Filters: Sea water - Diesel - Water separator
- Fixed three blade propeller
- 1 Engine access through companionway (opening with 2 gas pistons) - 2 Engine access through aft cabins

ELECTRICITY

- 12 V Circuit
- 2 Service batteries (120 Amp) - 1 Engine battery (120 Amp)
- 1 Load balancer
- 12 V Electrical panel (Fuses - Voltmeter - Water gauge - Fuel gauge - Battery warning - Fuel warning - Water warning)
- 3 230V Sockets
- 9 USB sockets
- 1 Shore power socket (230 V)
- Lighting: Overhead lights - Reading lights - Reading light, flexible and multi-directional
- LED navigation lights: 1 Masthead light - 1 Steaming light - 1 Mooring light on masthead
- Wire runs for optional cables

PLUMBING

- 1 Rotomolded freshwater tank 330 L / 87 US Gal, under berth in forward cabin - 1 Tank filling access
- Waterpressure system - Expansion tank - Inline filter
- 40 L / 11 US Gal Electric water heater (engine use)
- 1 Rigid black water holding tank for each WC
- Electrical shower drain pumps
- 1 Electric bilge pump
- 1 Manual bilge pump

GAS

- 1 Box for 2 gas bottles in the cockpit (diameter: 0,28 m/ 11" x Height: 0,44 m/ 1'5")
- Regulator and solenoid
- Gas leak detector

MISCELLANEOUS ITEMS

- Smoke detector



TRIM LEVEL & PACKS

TRIM LEVEL

	COMFORT	FAMILY
<ul style="list-style-type: none"> Upholstery padding (Cabins): Beige Upgrade of hotplate/galley oven: oven with grill 	<ul style="list-style-type: none"> ■ ■ 	
<ul style="list-style-type: none"> Cockpit bench extensions + 2 halyard bags below Hifi: Fusion + 2 Interior speakers & 2 Waterproof exterior speakers Salon & Galley: LED indirect lighting Galley: Refrigeration system, 12 V, in top-opening icebox (for storage below 0°C) Galley: Compact sink cover Clay with cutting board Battery charge display, Navicolor screen (3,5") 3 Additional 100 ampères service batteries 1 40 Amp battery charger AGM Batteries instead of standard Mosquito screens on portholes Access openings to port and starboard 	<ul style="list-style-type: none"> ■ ■ ■ ■ ■ ■ ■ ■ ■ ■ ■ 	<ul style="list-style-type: none"> ■ ■ ■ ■ ■ ■ ■ ■ ■ ■ ■
<ul style="list-style-type: none"> Bow stainless steel protection Aft transom protection Luxe polyester cockpit table, Stainless steel handrails, LED lighting, Central storage (15 L / 4 US Gal) Double berth, in the salon Galley: Sea water/fresh water foot pump Ventilators in salon and cabins Outboard engine bracket 		<ul style="list-style-type: none"> ■ ■ ■ ■ ■ ■ ■

ELECTRONICS PACKS: B&G

	COASTAL	OFFSHORE	COASTAL + OFFSHORE PACK - LARGE CONSOLES (requires the bow thruster)
<ul style="list-style-type: none"> Starboard steering console: 1 Multifunction touchscreen Zeus³ 7" wide wireless (GPS, Chart plotter, Chart reader - Cartography Navionics Silver included) Windex Windvane Wind Sensor (Windvane, Anemometer) Sensor (Log, Speedometer, Temperature) NAC3 Autopilot + Starboard helm console control Fixed V60 VHF, AIS receiver function Protective cover (Cadet Grey): Steering wheel & console 	<ul style="list-style-type: none"> ■ ■ ■ ■ ■ ■ ■ 	<ul style="list-style-type: none"> ■ ■ ■ ■ ■ ■ ■ 	<ul style="list-style-type: none"> ■ ■ ■ ■ ■ ■ ■
<ul style="list-style-type: none"> Port steering console: 1 Multifunction touchscreen Zeus³ 7" wide wireless (GPS, Chart plotter, Chart reader - Cartography Navionics Silver included) 1 Triton² display, on the port console WR10 Wireless autopilot remote control PC interface 		<ul style="list-style-type: none"> ■ ■ ■ ■ 	<ul style="list-style-type: none"> ■ ■ ■ ■
<ul style="list-style-type: none"> XXL consoles to port and starboard 1 Multifunction touchscreen Zeus^{3S} 9", on each console Electric engine controls, on the starboard console Windlass control with chain counter, on the starboard console Bow thruster control, on the starboard console 			<ul style="list-style-type: none"> ■ ■ ■ ■ ■

FASNET PACK

(requires the First Line pack and makes the Coastal pack obligatory)

- 3 Mast foot repeaters
- AIS 500
- H50 Wireless VHF set



PERFORMANCE PACK

(Incompatible with cradle option of the mainsail - Compatible with all ballast)

Boast supplied without sails (optional extra: Performance Sails)

FIRST LINE ALU PACK

- Polyester bowsprit with integrated anchoring gear and bobstay (for Code 0 and asymmetric spinnaker)
- Performance Classic aluminum mast (Z Diffusion), 2 Aft swept spreaders (+ 1 m / 3'3"). Track + Main sail ball-bearing traveler
- Textile hydraulic backstay
- Cathedral type Dyform standing rigging
- Flatdeck genoa furler
- 4 Additional halyard clutches (2 to starboard + 2 to port)
- Performance running rigging, Dyneema (Mainsail, Genoa, Code 0, Asymmetrical spinnaker, Halyards)
- German system (Two-way mainsheet at the helm station)
- Harken pulleys upgrade: 12 Black Magic, 8 Element (instead of standard)
- Genoa sheet tracks on side decks + Complete genoa rigging (Genoa sheets, Genoa cars)
- Performa winches upgrade (1 Port electric H46.2 STPEH rigging winch (Halyards) + 1 Starboard manual H46.2 STP rigging winch + 2 Manual H50.2 STP genoa sheet winches)
- White or black composite steering wheels
- First Line hull graphics (red)

FIRST LINE CARBON PACK

- Polyester bowsprit with integrated anchoring gear and bobstay (for Code 0 and asymmetric spinnaker)
- Performance classic carbon mast (Axxon), 2 Black anodized aluminum aft swept spreaders (+ 1 m / 3'3"). Track (Harken) + Main sail ball-bearing traveler
- Textile hydraulic backstay
- Black anodized aluminum boom
- Cathedral type Dyform standing rigging
- Flatdeck genoa furler
- 4 Additional halyard clutches (2 to starboard + 2 to port)
- Performance running rigging, Dyneema (Mainsail, Genoa, Code 0, Asymmetrical spinnaker, Halyards)
- German system (Two-way mainsheet at the helm station)
- Harken pulleys upgrade: 12 Black Magic, 8 Element (instead of standard)
- Genoa sheet tracks on side decks + Complete genoa rigging (Genoa sheets, Genoa cars)
- Performa winches upgrade (1 Port electric H46.2 STPEH rigging winch (Halyards) + 1 Starboard manual H46.2 STP rigging winch + 2 Manual H50.2 STP genoa sheet winches)
- Black composite steering wheels
- First Line hull graphics (red)

RIGGING PACKS

	PACK DOWNWIND	PACK UPWIND	PACK DOWNWIND + UPWIND
• 2 Genoa winches (H50.2 STA)	▪	▪	▪
• German system (Two-way mainsheet at the helm station)	▪	▪	▪
• Polyester bowsprit with integrated anchoring gear and bobstay (for Code 0 and asymmetric spinnaker)	▪		▪
• Asymmetrical spinnaker rigging / Code 0	▪		▪
• 2 Additional halyard clutches	▪		▪
• Genoa sheet tracks on side decks (pulls back the traveller on the self-trimming jib rail)		▪	▪
• Furling Dacron genoa (to replace the standard self-tacking jib)		▪	▪

CLASSIC MAST PACK

- Classic 9/10 anodized aluminum mast, 2 Spreaders
- Dacron semi Full Batten mainsail
- 2 Additional halyard clutches (to port)
- Lazy Jack System and Lazy bag in Natural color

TENDER PACK

- Retractable davits (Max. tender length: 3,10 m / 10'2", Maximum load: 180 kg / 397 lbs)
- Electric inflator / deflator
- Outboard engine bracket



OPTIONS

NAVIGATION ELECTRONICS: B&G

- 4G Radar
- Chart table: Multifunction Zeus^{3S} 9" wide wireless screen
- H50 wireless VHF set
- AIS 500
- Forward Scan Sensor (Forward underwater vision)
- 9" screen upgrade (with the Offshore pack)

RIGGING - SAILS

- Code 0 with "Top Down" furling system (incompatible with ICW mast, Incompatible with First Line Pack)
- Hydraulic backstay (for standard low air draft classical mast incompatible with mast with in-mast furling and ICW and First Line pack)
- 1 GRP mainsail arch with 2 Stand-Up mainsheet blocks
- Roller furling mast ICW + Genoa Dacron (I: 16,92 m / 55'6"; P: 15,75 m / 51'8"; Furling mainsail: 41 m² / 440 sq/ft; Genoa: 51 m² / 548 sq/ft)
- Self-tacking staysail rigging (Halyard sheave with block + Releasable forestay chainplate + 1 Self-tacking staysail sheet)

WINCHES

- 1 Port electric primary winch - H46.2 STAEH (instead of standard - Incompatible with First Line Pack)
- 1 Starboard electric primary winch - H46.2 STAEH (Incompatible with First Line Pack)
- 2 Electric genoa winches - H50.2 STAEH + 1 Winch handle (Incompatible with First Line Pack)
- 1 Harken Performa starboard maneuver electric winch - H46.2STP (implies pack First Line)
- 2 Electric Harken Performa genoa sheet winches - H50.2 STP (implies pack First Line)

HULL - DECK - COCKPIT

- Pearl grey gel-coat (with matching sticker on the halyard covers)
- Solid wood cockpit
- Slatted teak catwalks
- Teak slats on sundeck companionway
- "Luxe" polyester/wood cockpit table + Protective cover (Cadet Grey), Stainless steel handrails, Lighting, Central storage (15 L / 4 US Gal)
- Refrigeration unit for "Luxe" cockpit table
- Cover for standard cockpit table, Cadet Grey
- Gas cockpit griddle
- "Luxe" sprayhood, Windows Extra-Clear, Cadet Grey (2 Versions: with and without mainsail arch)
- Bimini "Luxe", with shading canvas and LED lighting, Cadet Grey (2 Versions: with and without mainsail arch)
- Cadet Grey bimini top full closing ("Luxe" sprayhood option required)
- Sunshade (Roof), Cadet Grey
- Cockpit cushions Dolce 51 with seatbacks
- 2 Companionway sunbeds with tilting backrests and built-in cup holder, Dolce 51
- Tunnel bow thruster + 2 Dedicated batteries (50 Amp - 12 V)
- Retractable bow thruster Quick + 2 Dedicated batteries (50 Amp - 12 V)
- NOMEN folding aluminum cleats (instead of standard)
- Aft fairleads (Aluminium mooring cleats on transom)
- 3 folding blades propeller
- White or black composite steering wheels (Incompatible with First Line Pack)
- Mooring kit:
 - Delta 20 kg/44 lbs anchor (galvanized steel)
 - Chain (diameter: 10 mm / 3/8" - Length: 32 m / 105')
 - Line (diameter: 18 mm / 11/16" - Length: 45 m / 147')
 - 6 Fenders:
 - 2 L (diameter: 250 mm / 10" - Length: 700 mm / 2'4")
 - 4 XL (diameter: 300 mm / 12" - Length: 880 mm / 2'11")
 - 4 Moorings lines (diameter: 18 mm / 11/16" - Length: 15 m / 49')
- Windlass control with chain counter in cockpit
- Outboard engine bracket (Incompatible with Tender Pack)
- Opening transom remote control
- Shore freshwater supply
- Deck wash with fresh water / sea water
- 1 Additional opening porthole, in the aft cabins (in coaming)
- Electric engine controls + Bow thruster control, on the starboard console (only with the 7" screens)
- Large swimming ladder attached to the aft platform (instead of standard)



INTERIOR EQUIPMENT

LAYOUT VERSIONS

- 3 cabins 3 heads version
- 4 cabins 2 heads version
- 4 cabins 4 heads version
- 5 cabins 3 heads version

AMBIANT

- Alpi white oak wood interior
- Brown oak laminated floors (only with Alpi white oak woodwork)
- Interior upholstery, according to swatches: Fabric, Leather, Ultraleather
- Upholstery padding (Salon and Cabins): Macadamia

MULTIMEDIA

- TV pre-assembly in the salon, below the chart table (Large galley versions)
- TV pre-mounted on riser (folding) in the salon (3 cabins 2 heads version)
- TV pre-assembly in owner's cabin
- BOSE speaker upgrade in the salon

DOMESTIC APPLIANCES

- Dishwasher for 6 sets (Only in lengthways galley counter version)
- Microwave oven (20 L)
- Stainless steel cooker 3 burner oven/broiler on gimbal (required Comfort or Family trim level)

ON BOARD COMFORT EQUIPMENT

- Berth in salon
- Seat back for central bench seat (3 cabins 2 heads version)
- Spring mattress in the cabins
- Pleated shades in the salon (Hull portlights)
- 3 Lithium batteries - 90 Amp (to replace the AGM batteries, required Comfort or Family trim level)
- Additional water tanks (200 L / 53 US Gal), under starboard aft berth
- Extra diesel tanks (200 L / 53 US Gal), under starboard aft berth
- 7,5 KVA 230 V / 50 Hz Generator
- Water maker (60 L/h / 16 US Gal/h)
- Air conditioning - 36 000 BTU (+ Shore socket extension cord - 15 m / 49'3")
- Diesel heater "air pulse"
- 12/230V inverter - 2 000 W
- Quiet Flush electric toilets - fresh water/Sea water
- Sea water/fresh water foot pump (Galley)